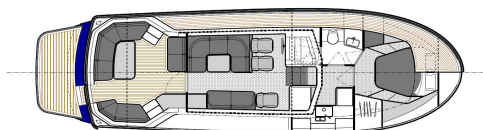


DALE 40



Dale Nelson, Brunel Quay, Neyland, Milford Haven, Pembrokeshire, SA73 1PY U.K.

Contact Mike direct: 07879 481717 Tel: 01646 603110 Fax: 01646 601061

Boat Model: DALE 40

DALE 40 Aft Cockpit

ENGINE MODEL

Volvo - 2 x 330hp - D6 - Speed - dependent upon fit out - maximum estimated speed 22 knots (cruise 16-18 knots)

Engine options up to 2 x 435hp with maximum speed of 26 knots dependent upon fit out - extra

DESIGN AND DRAWINGS

Drawings for servicing boat

Boat CE marked and supplied with a Declaration of Conformity

HULL AND SUPERSTRUCTURE

Hull - topside - colour - Blue

Superstructure - colour - White

FENDERING

Fendering to sheer line

Sprayrail - moulded into hull

DECK AND DECK COVERING

Flexi teek decking to cockpit sole and cockpit steps

Non slip finish to fore and side deck areas - non slip effect in GRP surface

EXTERIOR STAINLESS STEEL & EQUIPMENT

Pulpit with solid top rail to side decks

Grabhandle to aft end of wheelhouse wings

Mast Scanstrut - Tapered Mast DTM-R1-1

Stainless steel bow roller - mounted in recess in stemhead

One pair of mooring cleats to fore deck deck - type - stainless steel

One pair of mooring cleats to amidships - type - stainless steel

One pair of mooring cleats to aft quarters - type stainless steel

Boarding platform - GRP - with swim ladder - non slip effect in GRP surface

EXTERIOR FIT OUT

Electric anchor windlass - complete with plug-in control at anchor locker

Anchor - type Delta - galvanised steel with 60m galvanised chain

HATCHES

Hatch to forward cabin with blind

PORTLIGHTS

Portlights

WINDOWS and WHEELHOUSE DOOR

Wheelhouse windows (alloy frames painted white) - front windows - fixed; side windows slide opening - clear glass

Wheelhouse door to cockpit - alloy frame painted white

VENTILATION

Ventilators to forward accommodation and toilet

Ventilators to aft peak

CHAIN LOCKER

Chain locker with overboard drain and accessed through foredeck locker

Boat Model: DALE 40**FORWARD CABIN**

Forward cabin - double berth
Forward cabin - outboard side shelves with locker at each forward end
Forward cabin - Hanging locker
Forward cabin - Dressing table

FORWARD HEADS

Forward heads - toilet with wash basin, combined shower and stowage
Forward heads - moulded GRP and laminate finish
Forward heads - wooden worktop with stainless sink
Forward heads - teak grating to shower tray
Forward heads - mixer tap
Forward heads - separate shower control unit
Forward heads - stowage locker
Forward heads - dry roll holder for toilet roll
Forward heads - stainless steel towel rail
Forward heads - access door to forward cabin
Forward heads - mirror

GALLEY

Galley to forward accommodation
Corian galley top
Stainless steel sink
Mixer tap
Fiddle rail to galley top - timber
Galley lockers
Fridge
Hob diesel c/w fiddles
Oven diesel

WHEELHOUSE

Helm seat base - drinks locker in inboard end with lockers/drawers to forward face
Pilot seat base unit with stowage beneath
Seating to port side with lockers beneath seating
Folding leaf table with pedestal
Seating to starboard side with locker beneath
Locker to aft starboard side of wheelhouse
Timber footrest fitted to helm position base unit
Timber footrest fitted to helm position console panel
Timber footrest fitted to pilot position base unit
Timber footrest fitted to pilot position forward bulkhead/rail
Helm seat upholstered and complete with sliders and arm rests
Pilot seat upholstered and complete with sliders and arm rests
Chart table at pilot position - chart table removable and stowed in aft end of pilot seat base
Access hatch to engine room
Companionway to galley - open to galley
Companionway steps to forward accommodation

PAINTING - INTERIOR

Hardwood timber and veneer - coated with two pack polyurethane - semi-gloss finish

PAINTING - EXTERIOR

Boot topping - white (surface epoxy primed)
Antifouling - red (surface epoxy primed)

Boat Model: DALE 40

INTERIOR & EXTERIOR FINISH/UPHOLSTERY/COVERS

Interior fittings and hardware - chrome finish

Interior timber - American Cherry

White laminate bulkheads

White laminate to furniture with timber trim

Grab handles - timber

Forward cabin - sprung mattress

Side panels - forward accommodation - coachroof - GRP liner - lower panels - soft linings - vinyl

Side panels - wheelhouse - soft linings - vinyl

Wheelhouse - upholstered seating

Overhead panels - forward accommodation & wheelhouse - soft linings - vinyl

Curtains - forward accommodation portlights & wheelhouse side windows

Floor coverings - forecabin - carpet

Floor coverings - galley - carpet

Floor coverings - wheelhouse - carpet

Companionway steps to forward accommodation - timber

MAIN ENGINE

Twin engines as specified

Secondary cooled with flexible fire resistant water intake hose

Engines - flexibly mounted

STERNGEAR

Propellers - four bladed

Shaft - Marinemet

Stern tube - Epoxy GRP

Stern tube seal - type Sure seal fitted with flexible hose

P' brackets bonded into hull

Rudder solid profiled - Cast in AB2; Rudder stock machined in AB2; Steering arm - Cast in AB2; Rudder tube in Epoxy GRP

STEERING SYSTEM

Hydraulic steering system

Emergency tiller

Steering wheel - stainless steel

ENGINE ROOM VENTILATION

Engine room ventilation

INSULATION

High quality sound proofing to engine room

EXHAUST SYSTEM

Flexible hose wet exhaust system

Main engine exhaust muffler

ENGINE CONTROLS

Engine controls at interior helm

FUEL CAPACITY & FUEL SYSTEM

Fuel tank - integral within keel - capacity approx 2000 litres

Primary fuel filter system

Tank filler pipes - flexible, with stainless steel clips

Fuel / water gauge - electronic

ENGINE SEA WATER COOLING SYSTEM

Engine cooling systems fitted with sea water strainers

FRESHWATER CAPACITY, SYSTEM & EQUIPMENT

Freshwater tank - capacity - approx 430 litres

Non toxic piping

Fresh water pump

Aquafilter filter unit

Hot freshwater tank - 40 litres

Pressurised hot and cold water

Boat Model: DALE 40**BILGE SYSTEM**

Forward accommodation - 1 off electric bilge pump with reinforced PVC piping & automatic switch
Engine space - 2 off electric bilge pumps with reinforced PVC piping & automatic switch
Cockpit - 1 off electric with reinforced PVC piping & automatic switch
Engine space - 1 off manual bilge pump with reinforced PVC piping

WASTE AND DISCHARGE SYSTEM

Black water waste holding tank with deck outlet and overboard discharge - forward heads
Electric toilet to heads with freshwater flush - toilet type Tecma - forward heads
Galley sink drain - direct overboard
Forward heads sink drain - direct overboard
Shower drain - pumped - direct overboard
Odour free hose

DC ELECTRICS

Engine alternator
2 off engine battery capacity @ 113 a/hr each - type - sealed fitted in battery box
2 off domestic battery capacity @ 113 a/hr each - type - sealed fitted in battery box
Domestic and Engine battery isolator - with remote operated switches at interior helm
Engine / domestic battery link switch
Distribution board with voltmeter for domestic batteries

LIGHTING

Forward cabin - 4 off - LED
Forward heads - 1 off with integral switch
Galley - 3 off - LED
Wheelhouse - 4 off - LED
Wheelhouse - 1 off chart light
Engine space - 4 off
Cockpit - 2 off LED to underside of wheelhouse overhang

12V SOCKETS

One 12 volt socket on helm panel bulkhead - suitable to power floodlight

NAVIGATION LIGHTS

Navigation lights LED
Anchor light LED

CATHODIC PROTECTION

Sacrificial anode system

ENGINE INSTRUMENTATION

Engine control panel mounted at helm station - as supplied by engine manufacturer

CD/RADIO, TELEVISION, ELECTRONICS & NAVIGATION AIDS - TO OWNER REQUIREMENTS - extra

Windscreen wipers
Air horn
Magnetic compass fitted to interior helm position

COCKPIT FIT OUT

Cockpit - seating to aft
Cockpit - transom door to boarding platform
Cockpit sole hatch with gas struts
Steps to side decks
Flagstaff stainless steel - mounted on transom

LIFESAVING / SAFETY / FIRE EXTINGUISHERS / MOORING / CRADLE / LIFTING EQUIPMENT

Fire extinguishers fitted as required
Fire blanket in galley
Engine room automatic fire extinguisher
Four fenders
Boat hook - adjustable aluminium
Four mooring lines

Delivery: Ex Neyland after completion of sea trials.

Insurance covered by builders until delivery.