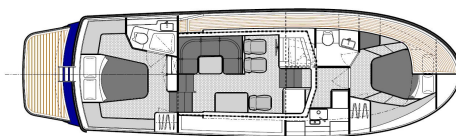
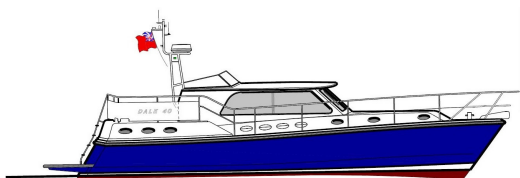


# DALE 40



Dale Nelson, Brunel Quay, Neyland, Milford Haven, Pembrokeshire, SA73 1PY U.K.

Contact Mike direct: 07879 481717 Tel: 01646 603110 Fax: 01646 601061

## **Boat Model: DALE 40**

DALE 40 Aft Cabin

### **ENGINE MODEL**

Volvo - 2 x 330hp - D6 - Speed - dependent upon fit out - maximum estimated speed 22 knots (cruise 16-18 knots)

Engine options up to 2 x 435hp with maximum speed of 26 knots dependent upon fit out - extra

### **DESIGN AND DRAWINGS**

Drawings for servicing boat

Boat CE marked and supplied with a Declaration of Conformity

### **HULL AND SUPERSTRUCTURE**

Hull - topside - colour - Blue

Superstructure - colour - White

### **FENDERING**

Fendering to sheer line

Sprayrail - moulded into hull

### **DECK AND DECK COVERING**

Flexi teek decking to aft deck

Non slip finish to fore and side deck areas - non slip effect in GRP surface

### **EXTERIOR STAINLESS STEEL & EQUIPMENT**

Pulpit with solid top rail to side decks

Pushpit with solid top rail to aft deck

Mast - Radar arch - stainless steel

Stainless steel bow roller - mounted in recess in stemhead

One pair of mooring cleats to fore deck deck - type - stainless steel

One pair of mooring cleats to amidships - type - stainless steel

One pair of mooring cleats to aft quarters - type stainless steel

Boarding platform - GRP - with swim ladder - non slip effect in GRP surface

### **EXTERIOR FIT OUT**

Electric anchor windlass - complete with plug-in control at anchor locker

Anchor - type Delta - galvanised steel with 60m galvanised chain

### **HATCHES**

Hatch to forward cabin with blind

Hatch to aft cabin

### **PORTLIGHTS**

Portlights

### **WINDOWS and WHEELHOUSE DOOR**

Wheelhouse windows (alloy frames painted white) - front windows - fixed; side windows slide opening - clear glass

Wheelhouse door to aft deck - alloy frame painted white

### **VENTILATION**

Ventilators to forward and aft accommodation and toilets

### **CHAIN LOCKER**

Chain locker with overboard drain and accessed through foredeck locker

## **Boat Model: DALE 40**

### **FORWARD CABIN**

- Forward cabin - V berths (Optional - double berth)
- Forward cabin - outboard side shelves with locker at each forward end
- Forward cabin - Hanging locker

### **FORWARD HEADS**

- Forward heads - toilet with wash basin, combined shower and stowage
- Forward heads - moulded GRP and laminate finish
- Forward heads - wooden worktop with stainless sink
- Forward heads - teak grating to shower tray
- Forward heads - mixer tap
- Forward heads - separate shower control unit
- Forward heads - stowage locker
- Forward heads - dry roll holder for toilet roll
- Forward heads - stainless steel towel rail
- Forward heads - access door to forward cabin
- Forward heads - mirror

### **GALLEY**

- Galley to forward accommodation
- Corian galley top
- Stainless steel sink
- Mixer tap
- Fiddle rail to galley top - timber
- Galley lockers
- Fridge
- Hob diesel c/w fiddles
- Oven diesel

### **WHEELHOUSE**

- Helm seat base - drinks locker in inboard end with lockers/drawers to forward face
- Pilot seat base unit with stowage beneath
- Seating to port side with lockers beneath seating
- Folding leaf table with pedestal
- Seating to starboard side with locker beneath
- Timber footrest fitted to helm position base unit
- Timber footrest fitted to helm position console panel
- Timber footrest fitted to pilot position base unit
- Timber footrest fitted to pilot position forward bulkhead/rail
- Helm seat upholstered and complete with sliders and arm rests
- Pilot seat upholstered and complete with sliders and arm rests
- Chart table at pilot position - chart table removable and stowed in aft end of pilot seat base
- Access hatch to engine room
- Companionway to galley - open to galley
- Companionway steps to forward accommodation
- Companionway steps to aft accommodation
- Companionway steps to aft deck

### **PAINTING - INTERIOR**

- Hardwood timber and veneer - coated with two pack polyurethane - semi-gloss finish

### **PAINTING - EXTERIOR**

- Boot topping - white (surface epoxy primed)
- Antifouling - red (surface epoxy primed)

## **Boat Model: DALE 40**

### **INTERIOR & EXTERIOR FINISH/UPHOLSTERY/COVERS**

Interior fittings and hardware - chrome finish

Interior timber - American Cherry

White laminate bulkheads

White laminate to furniture with timber trim

Grab handles - timber

Forward cabin - sprung mattress

Aft cabin - sprung mattress

Side panels - forward accommodation - coachroof - GRP liner - lower panels - soft linings - vinyl

Side panels - wheelhouse - soft linings - vinyl

Side panels - aft cabin - soft linings - vinyl

Wheelhouse - upholstered seating

Overhead panels - forward accommodation & wheelhouse - soft linings - vinyl

Overhead panels - aft cabin - soft linings - vinyl

Curtains - forward accommodation portlights & wheelhouse side windows

Curtains - aft cabin portlights

Floor coverings - forecabin - carpet

Floor coverings - galley - carpet

Floor coverings - wheelhouse - carpet

Floor coverings - aft cabin - carpet

Companionway steps to forward accommodation - timber

Companionway steps to aft accommodation - timber

Companionway steps to aft deck - timber

### **MAIN ENGINE**

Twin engines as specified

Secondary cooled with flexible fire resistant water intake hose

Engines - flexibly mounted

### **STERNGEAR**

Propellers - four bladed

Shaft - Marinemet

Stern tube - Epoxy GRP

Stern tube seal - type Sure seal fitted with flexible hose

P' brackets bonded into hull

Rudder solid profiled - Cast in AB2; Rudder stock machined in AB2; Steering arm - Cast in AB2; Rudder tube in Epoxy GRP

### **STEERING SYSTEM**

Hydraulic steering system

Emergency tiller

Steering wheels x 2 - stainless steel

### **ENGINE ROOM VENTILATION**

Engine room ventilation

### **INSULATION**

High quality sound proofing to engine room

### **EXHAUST SYSTEM**

Flexible hose wet exhaust system

Main engine exhaust muffler

### **ENGINE CONTROLS**

Engine controls at interior helm

Engine controls at exterior helm

## **Boat Model: DALE 40**

### **FUEL CAPACITY & FUEL SYSTEM**

Fuel tank - integral within keel - capacity approx 2000 litres  
Primary fuel filter system  
Tank filler pipes - flexible, with stainless steel clips  
Fuel / water gauge - electronic

### **ENGINE SEA WATER COOLING SYSTEM**

Engine cooling systems fitted with sea water strainers

### **FRESHWATER CAPACITY, SYSTEM & EQUIPMENT**

Freshwater tank - capacity - approx 430 litres  
Non toxic piping  
Fresh water pump  
Aquafilter filter unit  
Hot freshwater tank - 40 litres  
Pressurised hot and cold water

### **BILGE SYSTEM**

Forward accommodation - 1 off electric bilge pump with reinforced PVC piping & automatic switch  
Engine space - 2 off electric bilge pumps with reinforced PVC piping & automatic switch  
Aft cabin - 1 off electric with reinforced PVC piping & automatic switch  
Engine space - 1 off manual bilge pump with reinforced PVC piping

### **WASTE AND DISCHARGE SYSTEM**

Black water waste holding tank with deck outlet and overboard discharge - forward heads  
Black water waste holding tank with deck outlet and overboard discharge - aft heads  
Electric toilet to heads with freshwater flush - toilet type Tecma - forward heads  
Electric toilet to heads with freshwater flush - toilet type Tecma - aft heads  
Galley sink drain - direct overboard  
Forward heads sink drain - direct overboard  
Aft heads sink drain - direct overboard  
Shower drain - pumped - direct overboard  
Odour free hose

### **DC ELECTRICS**

Engine alternator  
2 off engine battery capacity @ 113 a/hr each - type - sealed fitted in battery box  
2 off domestic battery capacity @ 113 a/hr each - type - sealed fitted in battery box  
Domestic and Engine battery isolator - with remote operated switches at interior helm  
Engine / domestic battery link switch  
Distribution board with voltmeter for domestic batteries

### **LIGHTING**

Forward cabin - 4 off - LED  
Forward heads - 1 off with integral switch  
Galley - 3 off - LED  
Wheelhouse - 4 off - LED  
Wheelhouse - 1 off chart light  
Aft cabin - 4 off - LED  
Aft heads - 1 off with integral switch  
Engine space - 4 off  
Aft deck - 2 off LED

### **12V SOCKETS**

One 12 volt socket on helm panel bulkhead - suitable to power floodlight

### **NAVIGATION LIGHTS**

Navigation lights LED  
Anchor light LED

**Boat Model: DALE 40****CATHODIC PROTECTION**

Sacrificial anode system

**ENGINE INSTRUMENTATION**

Engine control panel mounted at helm station - as supplied by engine manufacturer

Engine control panel mounted at exterior helm station - as supplied by engine manufacturer

**CD/RADIO, TELEVISION, ELECTRONICS & NAVIGATION AIDS - TO OWNER REQUIREMENTS - extra**

Windscreen wipers

Air horn

Magnetic compass fitted to interior helm position

**AFT CABIN - AFT DECK FIT OUT**

Exterior helm console

Exterior helm screen

Seating - helm seat on pedestal

Seating - pilot seat on pedestal

Seating to aft with lockers beneath

Seating to aft - cushion bases and back rests

Fender stowage to pushpit rail

Boarding gate to pushpit rail to boarding platform

Boarding ladder to stern above boarding platform

Steps to side decks

Flagstaff stainless steel

**AFT CABIN**

Aft cabin - double berth with stowage beneath foot of berth; lockers; hanging locker; dressing table

**AFT HEADS**

Toilet with wash basin, combined shower and stowage

Moulded GRP and laminate finish

Timber worktop with stainless sink

Teak grating to shower tray

Mixer tap

Separate shower control unit

Stowage locker

Dry roll holder for toilet roll

Stainless steel towel rail

Access door

Mirror

**LIFESAVING / SAFETY / FIRE EXTINGUISHERS / MOORING / CRADLE / LIFTING EQUIPMENT**

Fire extinguishers fitted as required

Fire blanket in galley

Engine room automatic fire extinguisher

Four fenders

Boat hook - adjustable aluminium

Four mooring lines

**Delivery: Ex Neyland after completion of sea trials.****Insurance covered by builders until delivery.**