

SPECIAL PREVIEW



DALE 40

AFT CABIN & AFT COCKPIT



*the*  
LEGEND REBORN

At DALE Motor Yachts, the Nelson 38 will always be very special – not only is it extremely accomplished, it was the boat that established us as builders of finely crafted motor yachts. “Peerless build quality” was how the boating press put it, and earned us the reputation of *“Kings of boats that laugh in the face of rough seas”* – again the words of a magazine editor.

The standards established for the 38 then lead us into building the “achingly beautiful” DALE Classic 45, a new design from the Nelson designer, Arthur Mursell, that was developed to offer even greater levels of performance and sea keeping.

With every boat featuring a bespoke hand crafted interior, the 45 was an immediate hit with journalists and owners.

*And now, perhaps our most exciting boat to date is now moving off the drawing board and into production in readiness for launch early in 2019...*



DALE Classic 45



DALE Classic 45



DALE Classic 45



DALE Nelson 38

*...the DALE 40 takes the Nelson 38 to the next level with the best attributes of the 38 and 45.*

Sea keeping that already astonishes even the most experienced of helmsmen is further enhanced, and the new hull offers more accommodation space than the already supremely comfortable Nelson 38.

The forward underwater profile of the 40's hull follows the 38 to offer the best upwind ride, whilst the aft sections borrow from the 45's greater deadrise for improved handling in following seas.

The latest CNC techniques are being used to build the plug which means the DALE 40 hull will be built with the highest levels of accuracy and finish.

In addition, the design features...

- *a contemporary interpretation of the timeless Nelson lines – a design that we have spent months honing until every detail from every angle is pleasing to the eye*
- *more pronounced bow flare for a drier ride*
- *flared topsides with increased freeboard for greater internal hull space*
- *a raised sole that lifts the hull accommodation into the wider space created by the flared topsides*

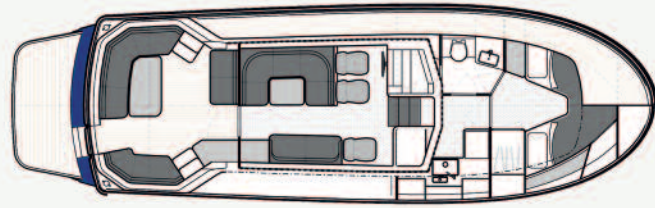
It goes without saying that the levels of personalisation for each owner will be everything you expect of a DALE build, whilst the fit, finish, installation and attention to detail will be of the high standards of the world's finest motor yachts.



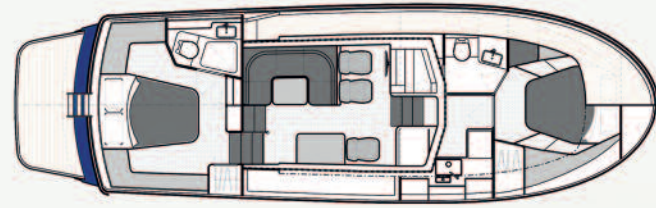
The increase in accommodation volume has given us...

- *comfortable 6'4" headroom*
- *a forward cabin with ensuite heads/shower and options for a double or v-berth and options for a separate shower cubicle/wet locker/day heads*
- *lower galley to the same spacious dimensions as our Classic 45 galley*
- *a spacious wheelhouse which offers the same interior volume as our Classic 45 wheelhouse*
- *even more generous side decks*
- *options for side door at helm position and electric sunroof to wheelhouse*
- *option for aft cockpit or spacious aft cabin with ensuite heads with separate shower area*
- *aft cabin model with exterior helm and increased size aft deck with comfortable seating and social area*
- *aft cockpit model with increased area (cockpit now same size as our Classic 45) with easy access to side decks, comfortable seating, generous storage, transom door and large bathing platform*
- *aft cockpit model with options for mid-cabin, full width opening doors onto cockpit and various canopy options*

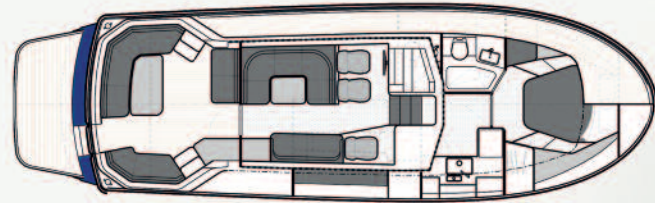




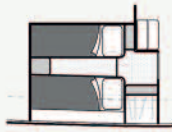
Aft cockpit with forward v-berth option



Aft cabin with forward double berth option (v-berth also available)



Aft cockpit with forward double berth and mid-cabin options



Exterior helm and aft deck layout will be finalised to create a sociable area



Hull colour to owners choice

### DALE 40 principal specifications

TT Boat Designs semi-displacement hull in GRP from CNC generated high accuracy plug

Length overall (inc bathing platform) ..... 13.48m / 44' 2"  
 Length over hull..... 12.48m / 40' 11"  
 Length over deck..... 11.92m / 39' 1"  
 Beam overall..... 4.23m / 13' 10"  
 Beam over hull..... 4.13m / 13' 6"  
 Draft (dependent on fit out)..... 1.2m / 3' 9"

Displacement (dependent on fit out).....14 tonnes  
 Fuel capacity ..... 2000 ltrs / 440 gallons  
 Water capacity..... 450 ltrs / 98 gallons  
 Electrics..... 12V  
 Engines..... 2 x 300hp – 2 x 435hp  
 Max speed: 22 – 27 knots Cruising speed: 16 – 22 knots

Available with aft cockpit with internal helm or aft cabin with external and internal helms

Layout to owner's specification – forecabin with v-berths or double berth, mid-cabin option for aft cockpit model

Aft cockpit from.....£654,000 (inc VAT)  
 Aft cabin from.....£696,000 (inc VAT)

Contact us by phone on +44 (0)1646 603112 or by email at: [info@dalenelson.co.uk](mailto:info@dalenelson.co.uk) if you'd like us to keep you up to date with news and photos as the build progresses.

And if you'd like to enquire about a DALE 40 build for yourself, you can speak direct to Mike Reynolds on +44 (0)1646 603112 or 0+44 (0)7879 481717

**DALE Motor Yachts**, Brunel Quay, Neyland Marina, Neyland, Pembrokeshire, United Kingdom SA73 1PY